



**Karran**

INSTALLING EDGE SINKS INTO  
POSTFORM LAMINATE COUNTERTOPS

OCTOBER 2014

**STEP 1**

After removing the sink from its box, inspect it for damage. Check the integrity of the rim as well as the bowls for any signs of shipping damage. If the sink is damaged or flawed, call your Karran Sinks distributor immediately.

**STEP 2**

Place the postform countertop upside down on a hard and level work surface. On the back side of the countertop measure and mark where the sink needs to be installed.

**STEP 3**

Mark the sink center line.

**STEP 4**

Place your premade outer template in the marked position.

For more information on making your template, please read "Making a Template - for Postform Installations".

**STEP 5**

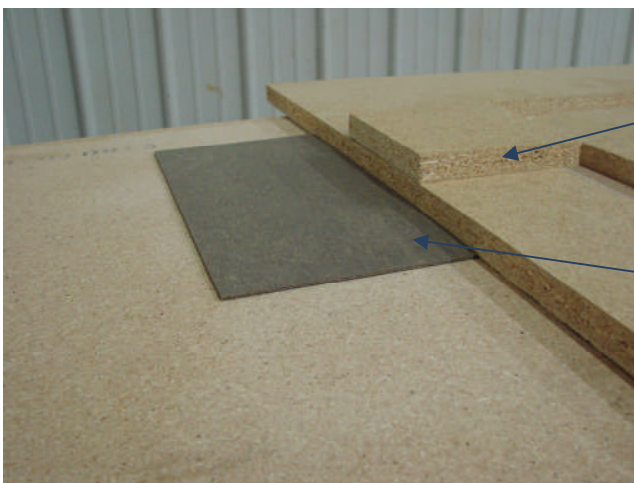
Place your premade inner template in the marked position. Use the cross on your templates for easy alignment.

**STEP 6**

Screw the templates securely to the countertop. Make sure you use screws of the appropriate length. They must not protrude through the laminate surface.

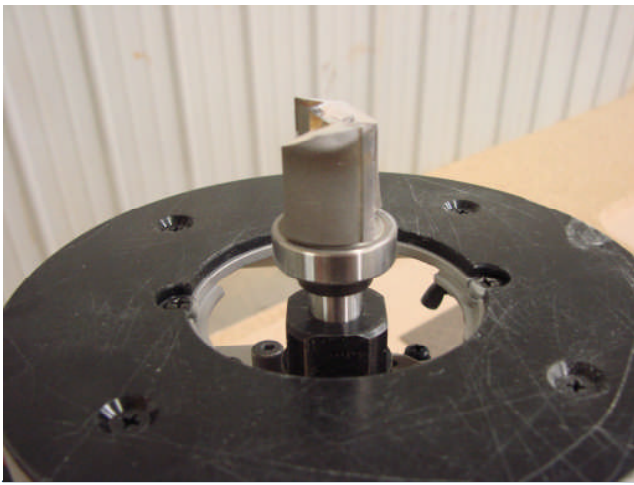
**STEP 7**

Finished countertop with outer and inner templates securely attached.

**STEP 8**

Place a small piece of substrate on the template. This substrate must match the thickness of the countertop substrate (typically 3/4").

Place two pieces of laminate on the back of the countertop.

**STEP 9**

Place a 1" to 1-1/8" wide pattern bit with top bearing into an adjustable plunge router. The length of the cutting face should be approximately 1".

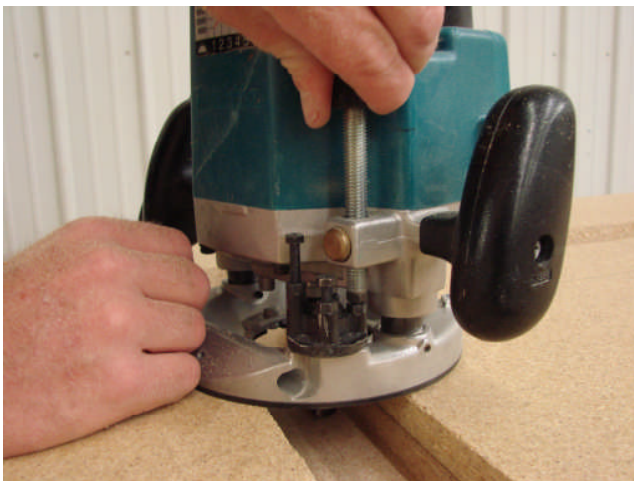
**STEP 10**

Place the base of the plunge router onto the piece of substrate and lower the bit until it touches the two pieces of laminate placed on the back of the countertop. Lock router in place.

**STEP 11**

Run the router bit around both the outer and inner templates removing all but a thin layer of wood from the back of the laminate.

After the initial pass, use a sharp chisel to dig into the remaining substrate to determine the thickness of the remaining layer of wood.

**STEP 12**

If you feel more wood can be removed without cutting into the back of the laminate, adjust router bit depth accordingly.

**STEP 13**

Make another pass with the router around the outer and inner templates.

**STEP 14**

Correct use of the router and pattern bit will leave a very thin layer of wood remaining attached to the back of the laminate, around 1/16th".

**STEP 15**

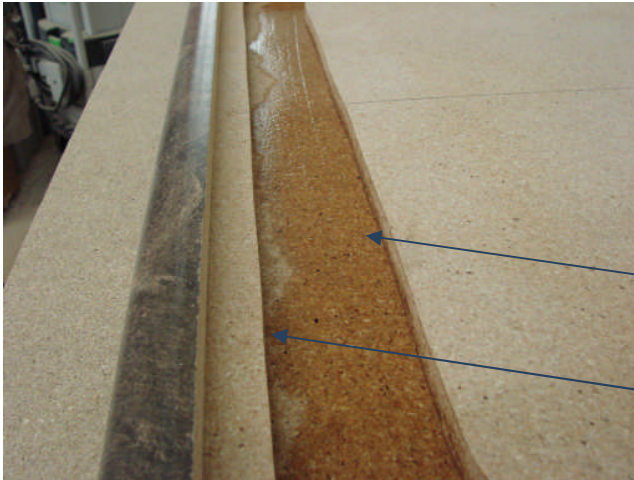
In some cases the router bit may cut so close that the back of the laminate may become partially visible. This is okay if it's only in limited areas but care should be taken. Postform countertops are not typically flat and if the bit cuts very close in one area, it may cut into the laminate in other areas.

**STEP 16**

Remove the outer and inner templates.

**STEP 17**

Spray a solvent into the gully on the remaining thin layer of wood. Toulene or lacquer thinner are good products to use. Acetone may also be used.

**STEP 18**

Care should be taken to apply solvent to the inside of the gully and let it soak towards the outside. Too much solvent on the outer perimeter of the gully may cause delamination between your substrate and the laminate.

Spray here.

Allow to soak towards here.

**STEP 19**

After allowing the solvent to penetrate for about 4 to 5 minutes, begin chiseling. Ensure the countertop is lying on a hard support surface. Using a 1/2" wide chisel may be easier than a wider one. Narrower chisels tend to offer more control than wider ones.

**STEP 20**

Using your chisel, remove all of the wood from the back of the laminate.

STEP 21



After chiseling has been completed.

STEP 22



A wire brush may prove helpful to clean the back of the laminate.

STEP 23



Use a solvent such as toluene or lacquer thinner to remove the remaining contact adhesive.

STEP 24



Preparation of the countertop is now complete. The countertop is now ready for the sink installation.

**STEP 25**

It is a good idea, though not always necessary, to remove the inside section prior to gluing the sink in. Drill a 1/2" hole on the inside perimeter.

**STEP 26**

Flip the countertop over and using a laminate trim router, remove the inside section. Play close attention to guiding the trim router around the inside perimeter of the gulley and not the outside perimeter.

**STEP 27**

After completion of the removal of the inside section.

**STEP 28**

While it may not be needed, removing the inside section does allow for the use of a palm sander in cleaning the back of the laminate.

**STEP 29**

Clean the back of the laminate thoroughly using denatured alcohol and a clean rag.

**STEP 30**

Clean the rim of the sink thoroughly using denatured alcohol and a clean rag.

**STEP 31**

Prepare to glue the sink to the back of the laminate. You will need a 10:1 mix gun and a 10:1 two part solid surface seaming adhesive cartridge. Use a dark brown color as this will most closely match the brown laminate backing.

**STEP 32**

Insert the adhesive cartridge into the mix gun.

**STEP 33**

Purging of the tube is important to ensure both catalyst and adhesive are dispensing. Simply squeeze out a small amount to ensure both are flowing.

**STEP 34**

Attach the static mixing tip. Twist to lock in place.

**STEP 35**

Squeeze a 6" bead of the solid surface seaming adhesive out of the cartridge onto a scrap surface to ensure the adhesive and catalyst are fully mixed.

**STEP 36**

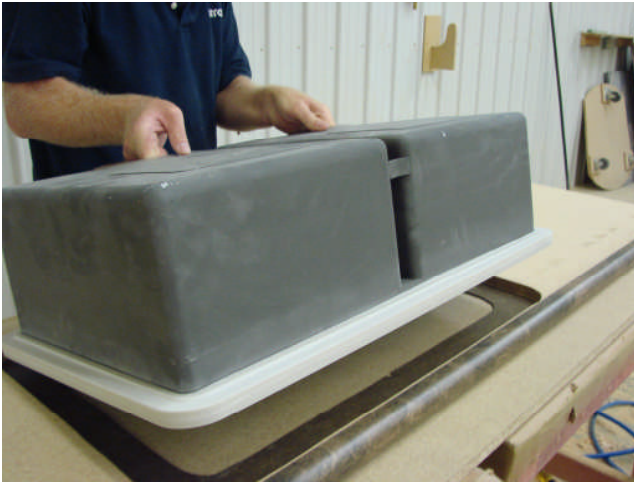
Apply a continuous bead about 1/8" back from the inner front edge of the sink. The bead should be about 1/4" to 3/8" wide. Be cautious not to exceed this amount.

STEP 37



Make sure the bead is continuous with no gaps.

STEP 38



Place the sink carefully onto the back of the laminate.

STEP 39

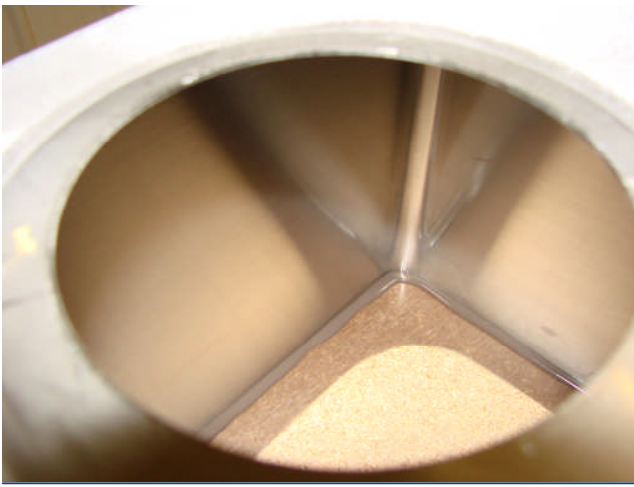


Measure from the front of the countertop to the bowl wall on both ends to ensure the sink is straight.

STEP 40



An even gap should be visible around the perimeter of the sink rim.

**STEP 41**

Seaming adhesive should be visible oozing out on the inside of the bowl wall around the inside perimeter of the sink.

**STEP 42**

Leave the sink and countertop for 30 to 40 minutes to allow seaming adhesive to fully cure.

**STEP 43**

Some installers opt to use no weight during the curing process, relying solely on the sink's weight. Others prefer to use about 5lbs to 10lbs per bowl.

**STEP 44**

Once the seaming adhesive has fully cured, add your undermount support strips. Cut 1-1/2" to 2" wide strips of particleboard to use as support strips.

Begin by placing the strip on the underside of the countertop and sliding it over the rim. Take note whether the wood strip hits the rim as shown here or slides over smoothly. Also notice if there is a gap between the underside of the rim and the wood strip once in place.

## STEP 45



To prevent telegraphing or haloing, it is imperative that the underside of the wood substrate and the underside of the sink rim are flush and level. If the rim is higher than the substrate, use a belt sander to sand it flush to the substrate.

## STEP 46



Apply some wood glue to the strip of wood and staple in place.

## STEP 47



If the sink rim is lower than the substrate, mix up some Bondo body filler and place some on the rim of the sink. This will fill the void once the support strip is stapled in place.

## STEP 48



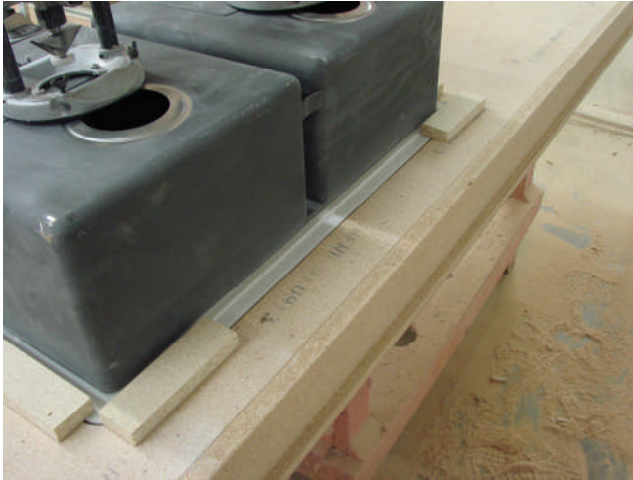
Apply some wood glue to the wood support strip.

STEP 49



Staple the wood support strip into place. The Bondo applied to the rim will spread and fill the gap that existed between the rim and wood strip.

STEP 50



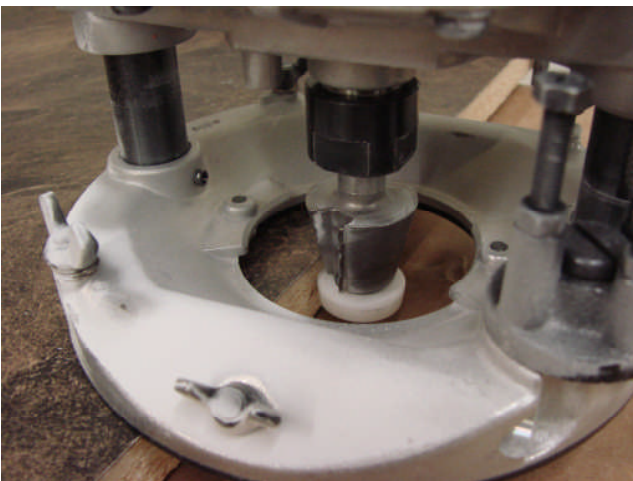
Do not place wood support strips where they may interfere with faucet placement.

STEP 51



Flip the countertop over.

STEP 52



Final trimming of the laminate will be accomplished with a bevel bit. This bevel bit has a 10° cutting angle and an 1/8" oversized nylon bearing. This custom router bit can be ordered from your Karran Sinks distributor.

Place the bit in an adjustable depth plunge router. Lower the bit so that the bearing is running just below the laminate and the oozing seaming adhesive.



**STEP 53**

Make a pass around the perimeter of the sink, letting the bearing guide along the sink wall.

**STEP 54**

Carefully examine the amount of overhang remaining after the initial pass.

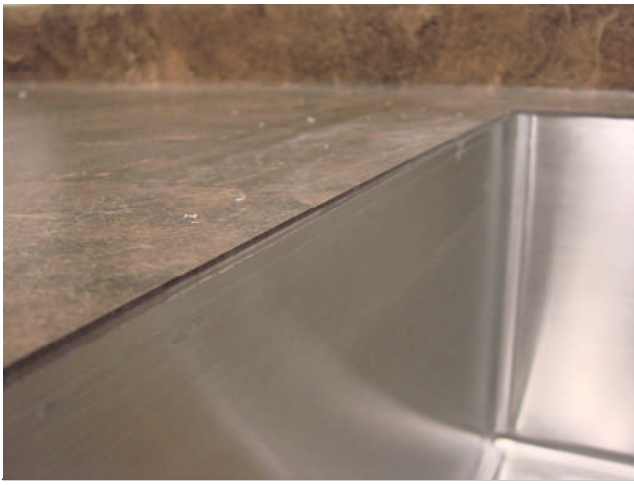
The goal is to trim the laminate as close to the stainless steel wall as possible without touching the wall with the router bit.

**STEP 55**

Adjust the depth of the router bit slightly lower so as to achieve a closer cut of the laminate to the sink bowl wall.

**STEP 56**

Make a second pass. Carefully examine the amount of overhang remaining after the second pass. If you feel you can cut even closer, adjust the depth of the router bit slightly lower and make a third pass. Repeat this process as needed until you feel you are cutting as close to the sink wall as possible without touching it.

**STEP 57**

A well routed installation will leave minimal laminate and adhesive remaining. When starting to router, it is always a good idea to start on the front edge of the sink. This is the least visible area to the homeowner should any repair work be needed. Should the router bit scuff the stainless steel wall, use a coarse grit sandpaper to hand sand the area parallel to the grain on the sink wall. Then move to successively finer grits of sandpaper until you have matched the finish of the stainless steel.

**STEP 58**

Removing the last remaining overhang of laminate and seaming adhesive may be accomplished by hand filing. Use an assortment of files including flat and round files to hand file the laminate until it is flush with the bowl wall.

**STEP 59**

File the edge of the laminate to the point that the stainless steel wall starts to show through the glue line. Remaining seaming adhesive on the bowl wall will simply peel off.

**STEP 60**

Use a round file in the corners.

**STEP 61**

Some final hand sanding with a fine grit sandpaper will be needed to completely smooth and blend the laminate edge and stainless steel sink wall.

**STEP 62**

Use a fine grit flap wheel (180 grit) in a drill to restore horizontal grain lines in sink wall if needed after sanding. Make sure to keep the drill horizontal and do not move it up and down.

Once blended, wipe the sink and countertop clean. To give the finished sink a lustrous glow, wipe the sink down with WD-40.

**STEP 63**

Your sink is now seamlessly installed in your laminate countertop.

**STEP 64**

When installing faucets, these will be installed directly into the countertop. Use a 1-1/2" hole saw to drill the necessary holes.

STEP 65



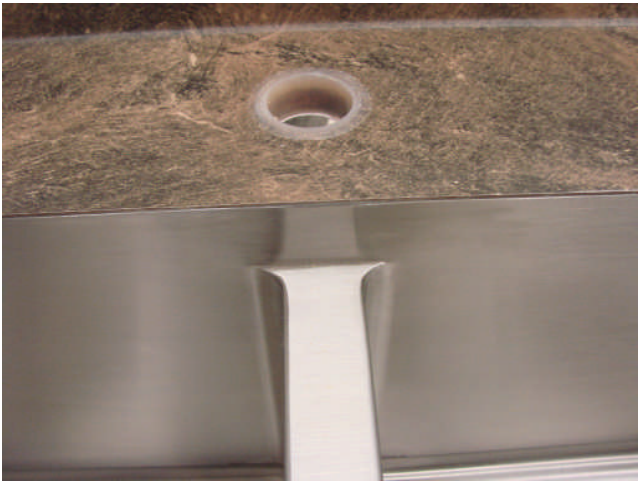
Take the FHSR (Faucet Hole Seal Ring) supplied with your sink and place a bead of silicone around the base of it.

STEP 66



Slide it into each drilled hole.

STEP 67



Wipe up excess silicone with a wet rag.

COMPLETED INSTALLATION

